

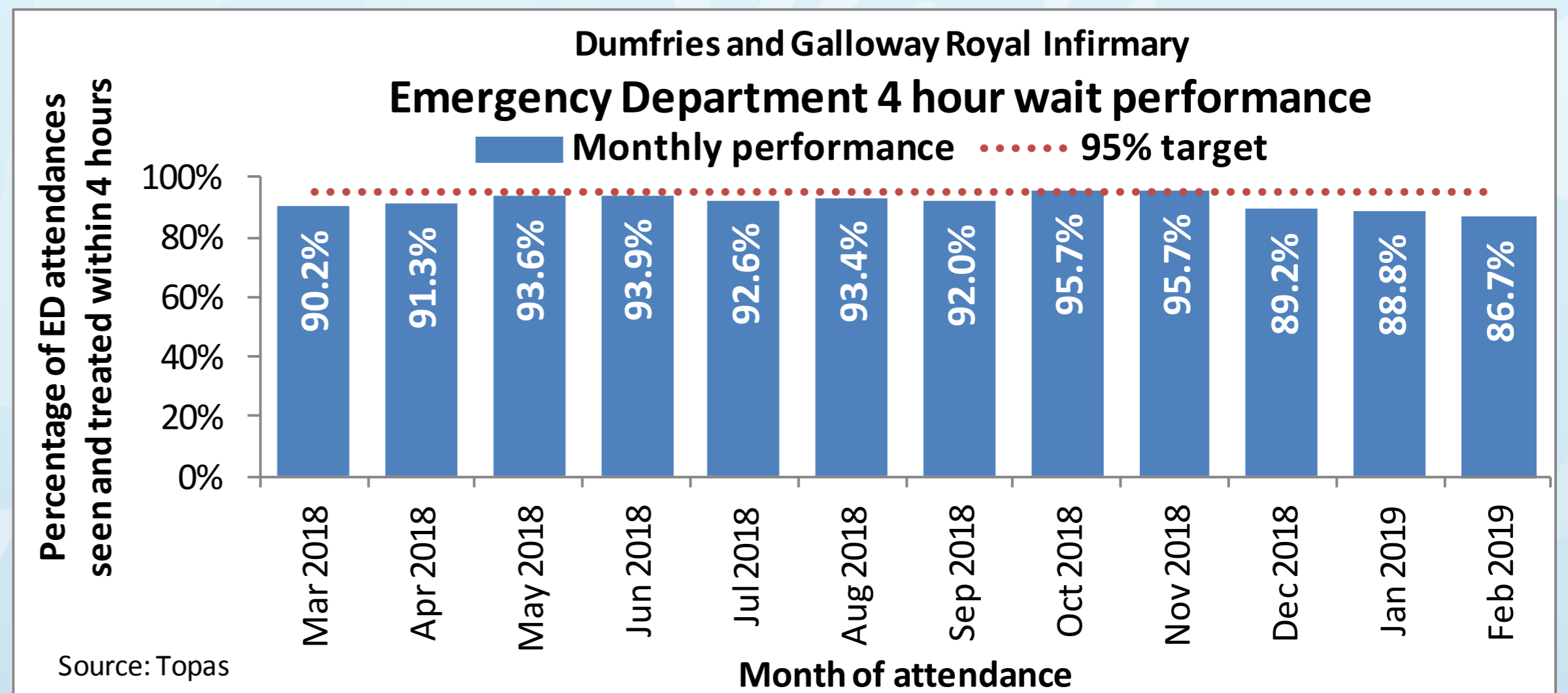
Maintaining patient flow in Dumfries and Galloway Royal Infirmary

What we seek to do for good patient care

See patients quickly in Emergency Department

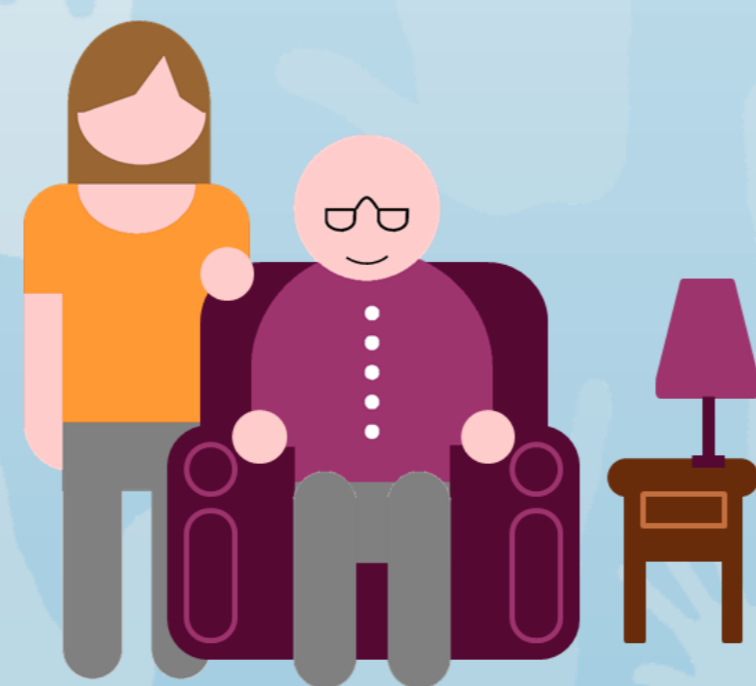
The emergency department has a target of seeing and treating 95% of everyone who comes through their doors within four hours.

In February 2019 the emergency department saw and treated 86.7% of patients within four hours.

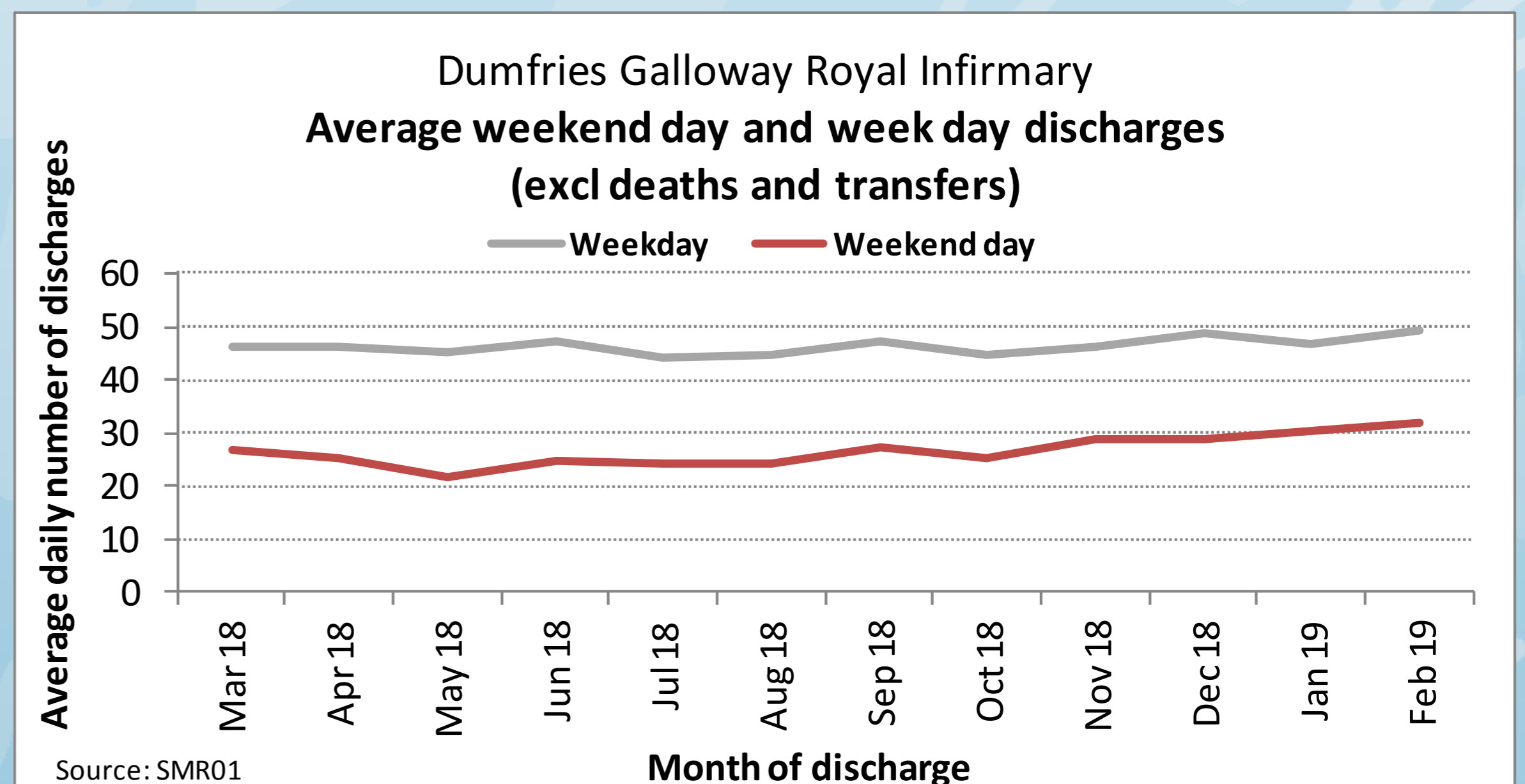


Discharge patients at weekends as much as during the week

People don't stop getting sick at the weekend, so it's important to make sure there are beds available for new patients at all times.



In February 2019, 49 people were discharged home from the hospital on an average weekday compared to 32 people on an average weekend day - that's around a third fewer on weekend days compared to week days.



Ensure patients are in the correct place

Hospital beds are a valuable resource so it's important that they are used by people who need the care of hospital staff.

On average 19% of patients in the hospital at any one time no longer need hospital care. The most recent audit showed that 47 patients (20.9% of those audited) could now be being cared for elsewhere.

