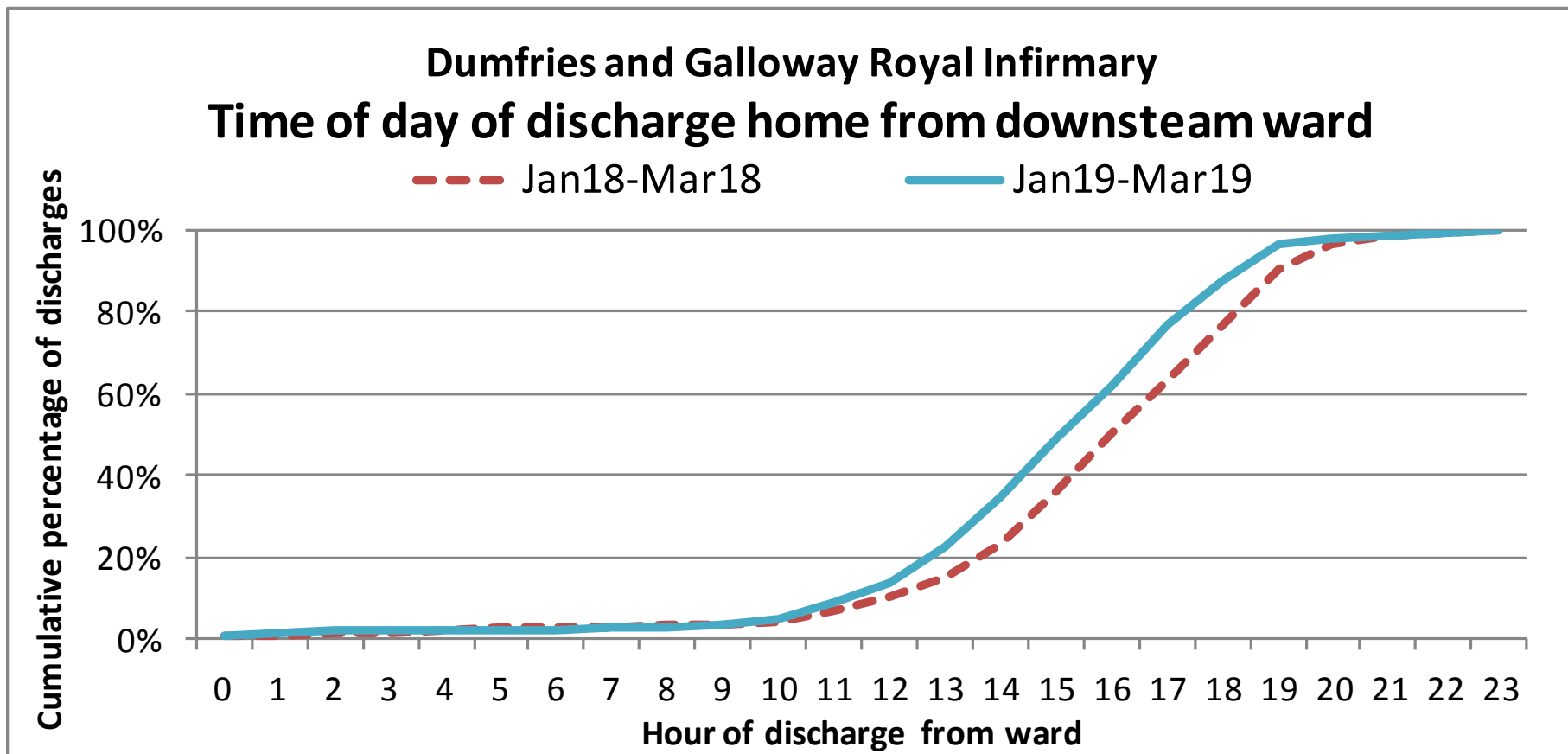


Time of day of discharge

Example analysis

Shifting the curve - DGRI

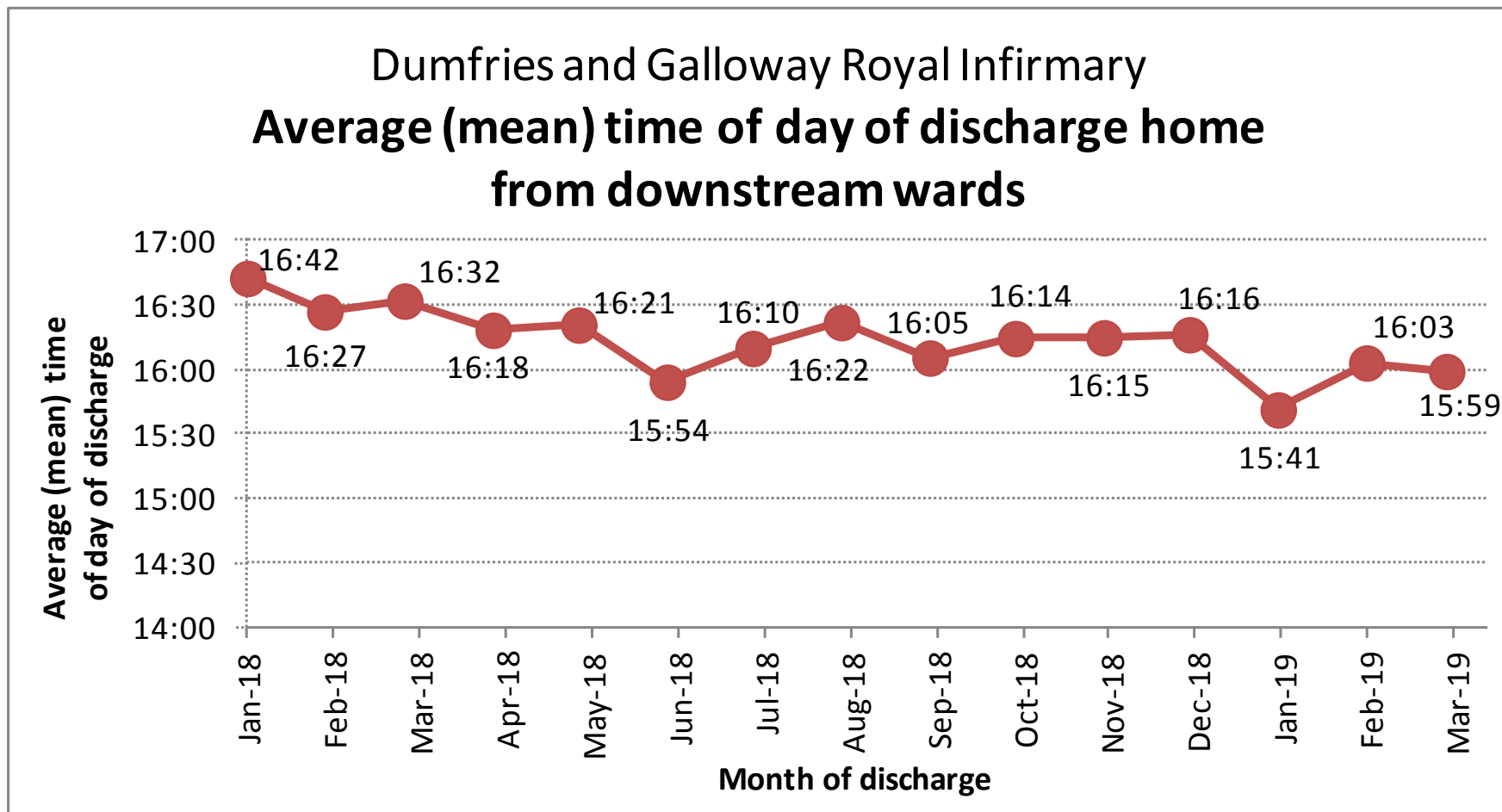
Time of day of discharge



There is some evidence that the discharge curve has shifted to the left in the current quarter compared to the same quarter in 2018, meaning more discharges home are taking place earlier in the day. For example, percentage home before 2pm (i.e. between 6am to 2pm): 19.6% in Jan18-Mar19 compared to 12.5% in Jan18-Mar18.

Shifting the curve - DGRI

Average time of day of discharge



Average discharge time from downstream wards was 3:59pm in March 2019. This is 33 minutes earlier than the figure in March 2018.

Examples of presenting time of day of discharge data back to wards

Ward D8

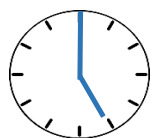
Discharge times during October 2018



3%
By 12 noon



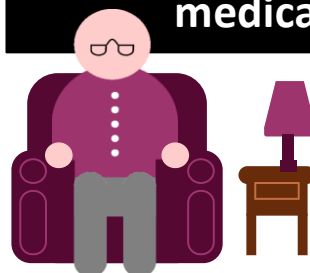
13%
By 2pm



47%
By 5pm



Time of day of discharge home from medical wards (B2, C4, C5, D7 and D8)



Average discharge time in October 2018

16:16

4 minutes earlier
than for discharges in September 2018
14 minutes earlier
than for discharges in August 2018